

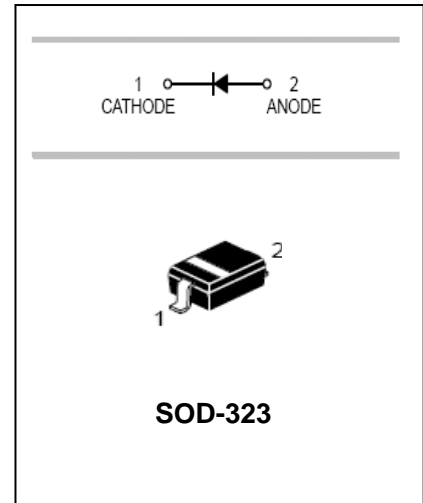


## High speed switching diodes

## MMDL6050

### FEATURES

- Small Surface Mounting Type:  
SOD-323
- High Speed :t=4.0ns Typ



### APPLICATIONS

- High speed switching

### ORDERING INFORMATION

Type No.	Marking	Package Code
MMDL6050	5A	SOD-323

### MAXIMUM RATING @ Ta=25°C unless otherwise specified

Parameter	Symbol	Limits	Unit
Reverse Voltage	$V_R$	70	V
Forward Current	$I_F$	200	mA
Peak forward surge current	$I_{FM(surge)}$	500	mA
Power Dissipation	$P_D$	200	mW
Thermal resistance junction to ambient	$R_{\theta JA}$	635	°C/W
Junction temperature	$T_j$	150	°C
Storage temperature	$T_{STG}$	-55 to +150	°C

### ELECTRICAL CHARACTERISTICS @ Ta=25°C unless otherwise specified

Parameter	Symbol	Min.	Typ.	Max.	Unit	Conditions
Reverse breakdown voltage	$V_{(BR)}$	70			V	$I_R=100\mu A$
Forward voltage	$V_F$	0.55		0.7 1.1	V	$I_F=1.0mA$ $I_F=100mA$
Reverse current	$I_R$			0.1	$\mu A$	$V_R=50V$
Capacitance between terminals	$C_T$			2.5	pF	$V_R=0V, f=1.0MHz$
Reverse Recovery Time	$t_{rr}$			4.0	ns	$I_F=I_R=10mA$

High speed switching diodes

**MMDL6050**

TYPICAL CHARACTERISTICS @  $T_a=25^\circ\text{C}$  unless otherwise specified

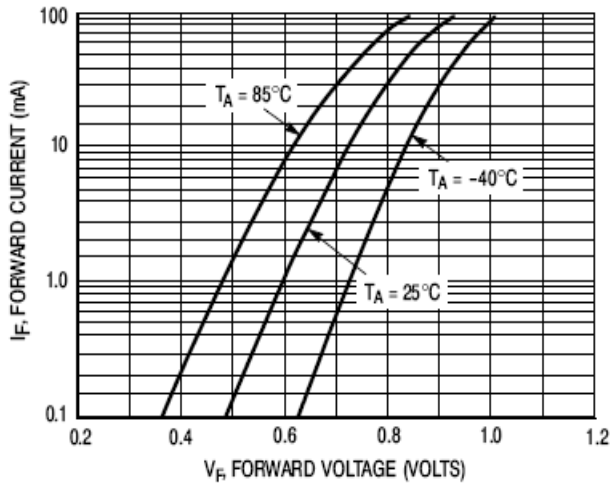


Figure 2. Forward Voltage

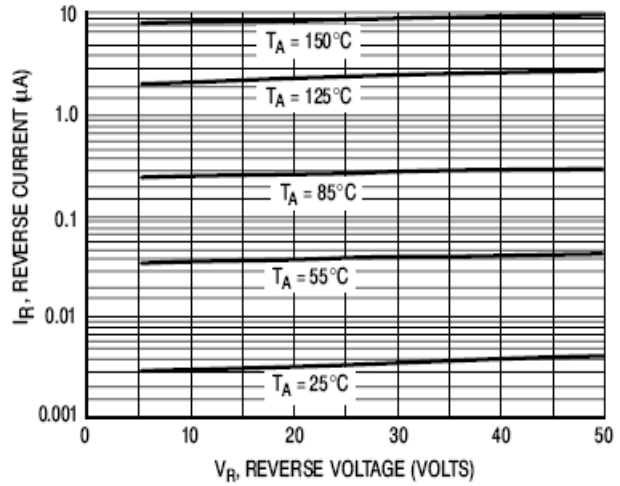


Figure 3. Leakage Current

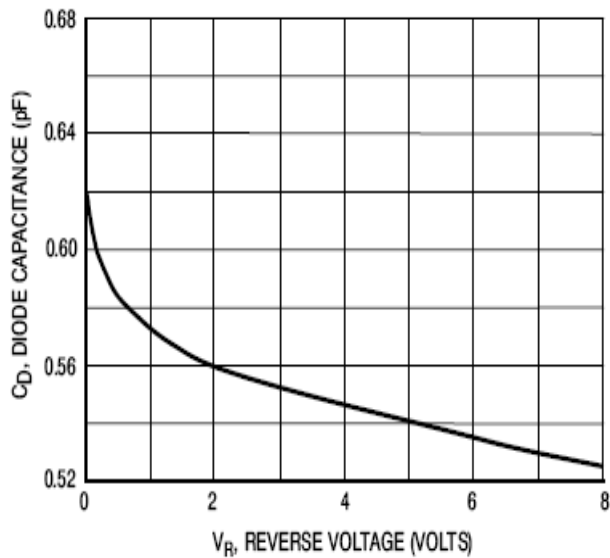


Figure 4. Capacitance

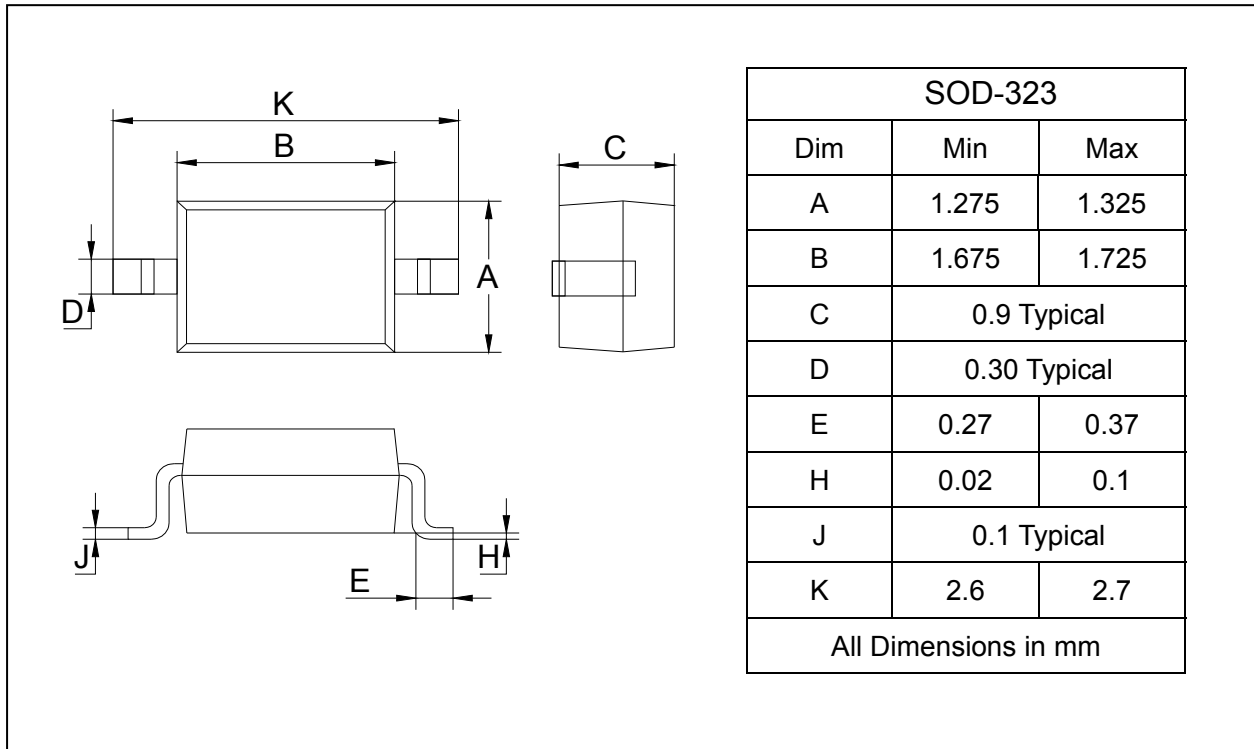
## High speed switching diodes

## MMDL6050

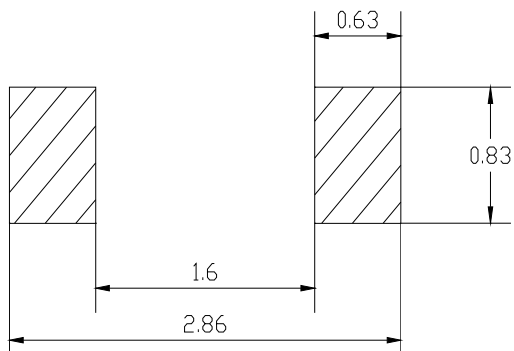
### PACKAGE OUTLINE

Plastic surface mounted package

SOD-323



### SOLDERING FOOTPRINT



Unit : mm

### PACKAGE INFORMATION

Device	Package	Shipping
MMDL6050	SOD-323	3000/Tape&Reel